

Way Maker

Words and Music by
Osinachi Kalu Okoro Egbu

♩=68

VERSE 1

G

D



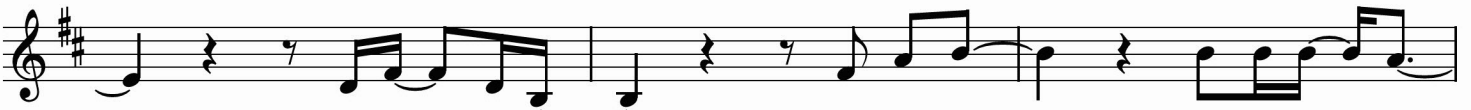
1. You are here, — mov-ing in — our — midst; I wor - ship You, .

3

A^{sus}

Bm

G



— I wor - ship You. — You are here, — work-ing in — this —

6

D

A^{sus}

1.
Bm



— place; I wor - ship You, — I wor - ship You. — 1. You are here,

9

2.
Bm

CHORUS

G

D



— You are Way Mak-er, Mir - a - cle Work-er, Prom-ise Keep-er, Light in the dark - ness, .

12

A^{sus}

1.
Bm

2.
Bm

A



— my God, that is who You — are. You are are. 2. You are here, —
(3. You are here,) —

VERSE 2 & 3

G

D

A^{sus}



— touch-ing ev - 'ry — heart; I wor - ship You, — I wor - ship .
— turn - ing lives — a - round; I wor - ship You, — I wor - ship .

18

Bm

G

D



— You. You are here, — heal - ing ev - 'ry — heart; I wor - ship You, .
— You. You are here, — mend - ing ev - 'ry — heart; I wor - ship You, .

21 1. A^{sus} Bm 2. A^{sus}

I wor - ship You. 3. You are here, yeah, I wor - ship.

CHORUS

24 Bm G

You, Lord. You are Way Mak - er, Mir - a - cle Work - er,

26 D A^{sus} 1, 2, 3.
Bm

Prom - ise Keep - er, Light in the dark - ness, my God, that is who You are. You are

29 4. TAG 1a Bm G D/F#

are. That is who You are. That is who You are. That is who You are.

32 A 1. Bm 2. Bm

are. That is who You are. That is who You are.

35 INSTRUMENTAL G² D A⁽⁴⁾ Bm⁷

BRIDGE

40 G D

E - ven when I don't see it, You're work - ing. E - ven when I don't feel it, You're work - ing.

42 **A^{sus}** 1, 2, 3.
Bm

You nev - er stop, You nev - er stop work - ing. You nev - er stop, You nev - er stop work - ing.

44 4.
Bm

You nev - er stop, You nev - er stop work - ing.

9 **G** CHORUS **D**

Way Mak - er, Mir - a - cle Work - er, Prom - ise Keep - er, Light in the dark - ness,

12 **A^{sus}** 1.
Bm

— my God, that is who You _ are. You are

49 2.
Bm⁷ TAG 1b
G²

That is who You _ are. That is who You _

52 **D/F#** **A⁽⁴⁾**

are. That is who You _ are. That is who You _

54 1.
Bm⁷ 2.
Bm⁷

are. That is who You _ are.